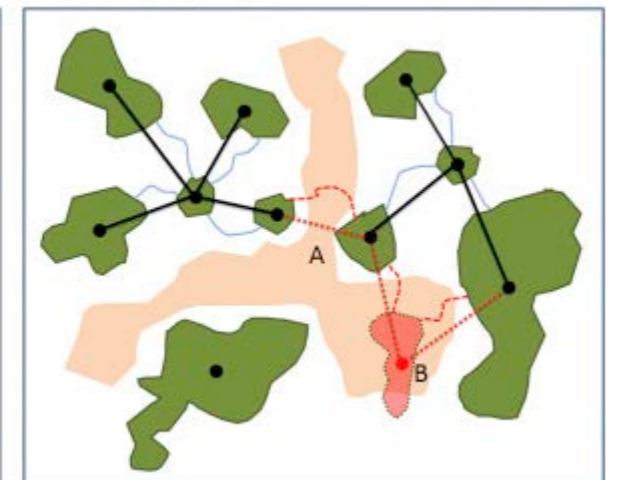
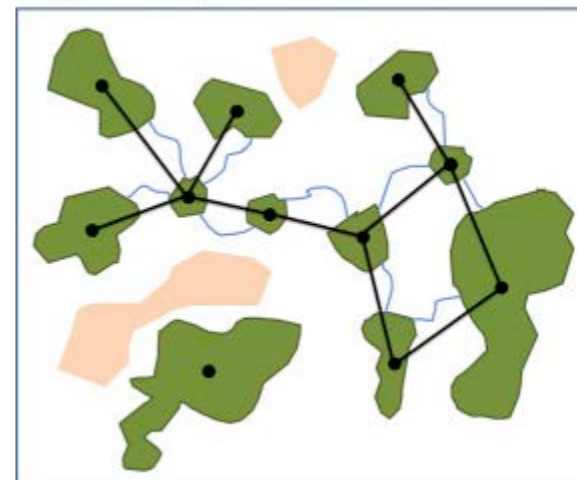




# Nadenken over 'gezonde' landschappen

## Hoe wordt het geheel meer dan de som?

Prof. Dr. Hans Van Dyck



# Kijken naar een landschap



« Landschappen inspireren  
& integreren »



# Historische kijk op het landschap



Prof. Jean Baptiste Massart  
(1865-1925)

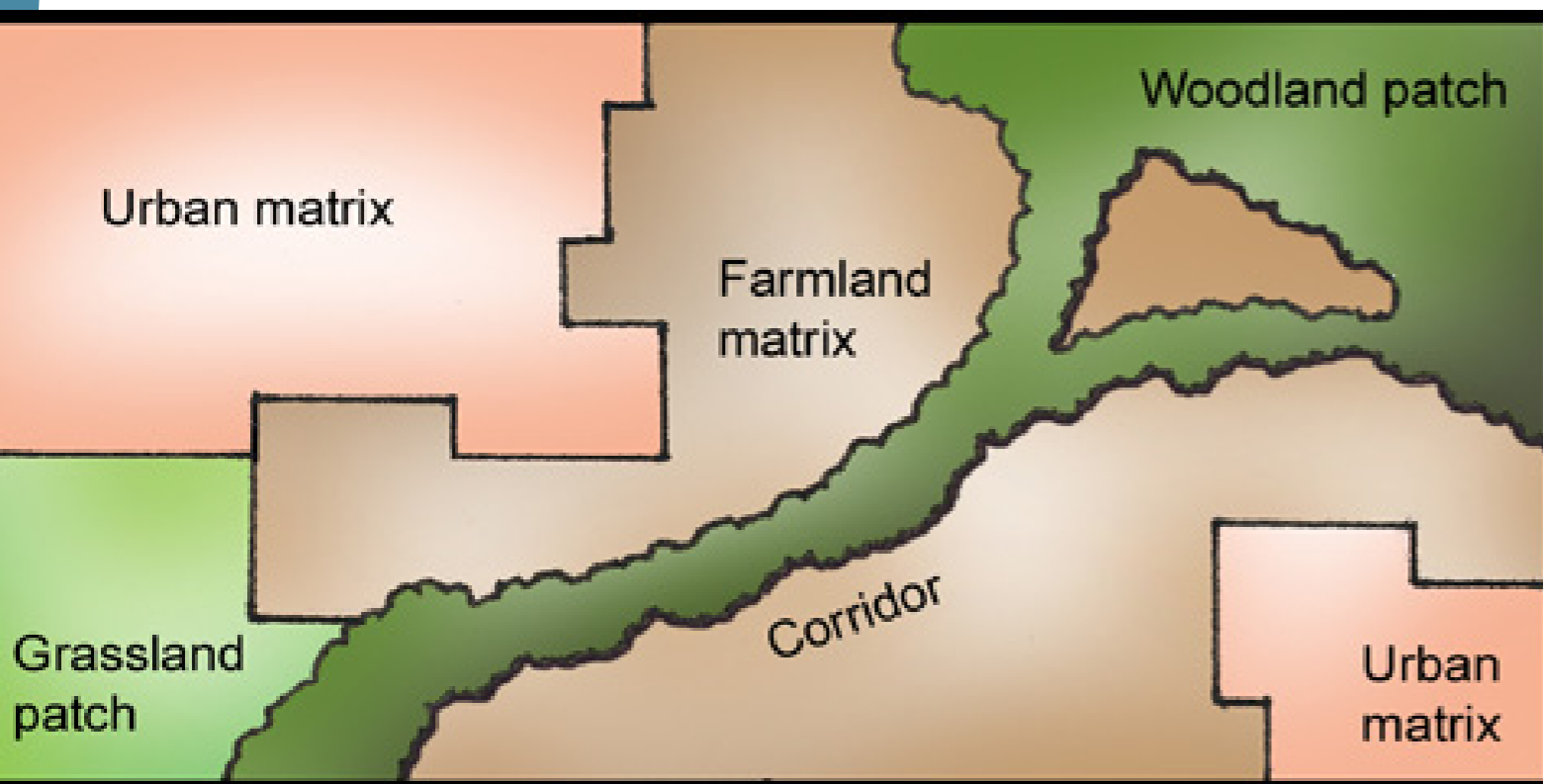


[www.recollectinglandscapes.be](http://www.recollectinglandscapes.be)



# Landschapsecologie

## Relatie landschapsstructuur & ecologische processen

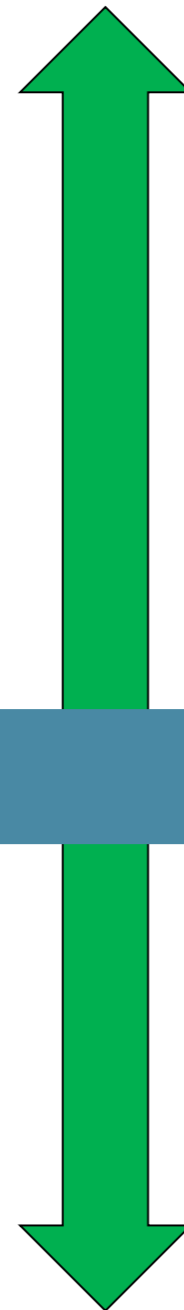
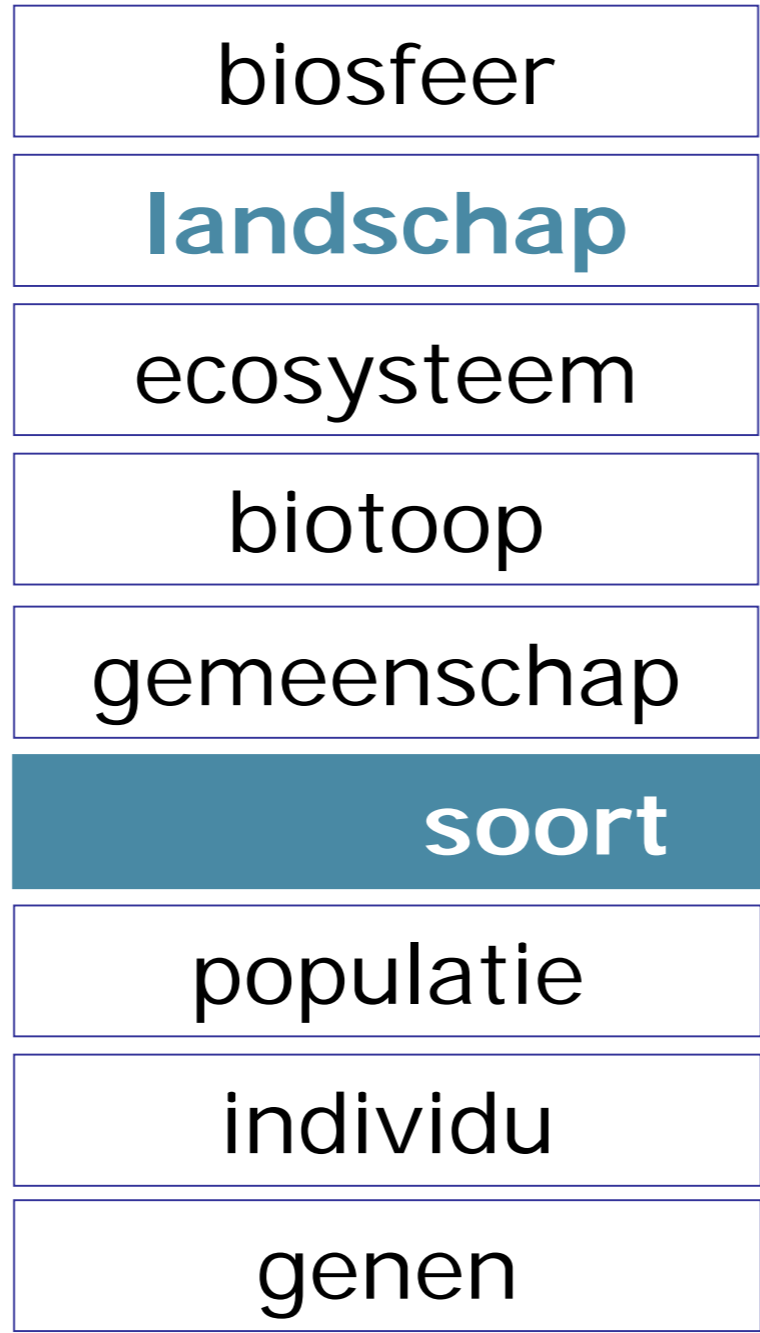
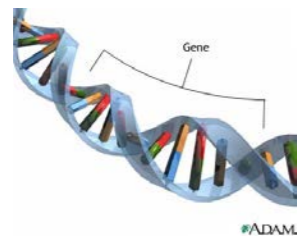


- Samenstelling
- Kenmerken afzonderlijke eenheden
- Configuratie
- Fragmentatiegraad
- Connectiviteit
- Landschapsmatrix

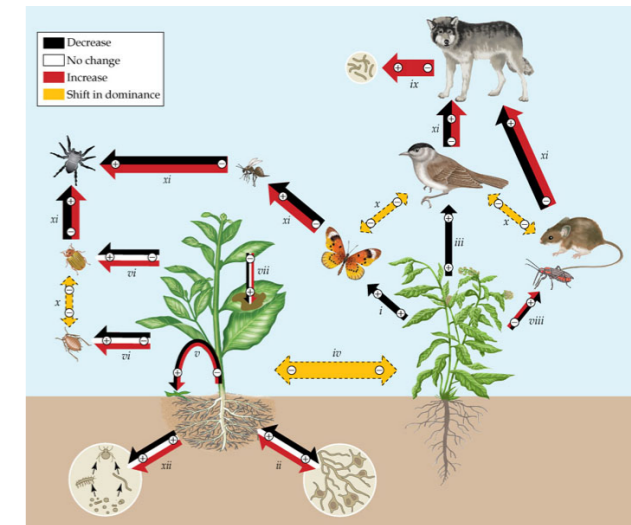
[Patch-Matrix-Corridor kijk op het landschap]



# Biodiversiteit: meer dan soorten alleen



**Ecosysteem functies**

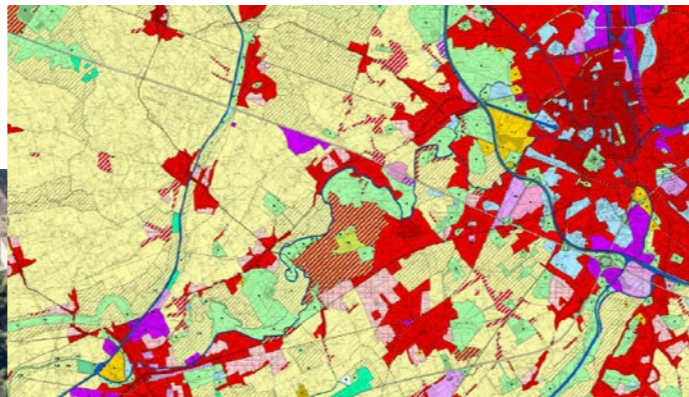


**Wisselwerking**



# Landschap: alleen helikopter-perspectief?

↓ topdown



Functioneel landschap: gaat over  
'emergente' eigenschappen

bottom-up



# Hanski-blik (deel 1)

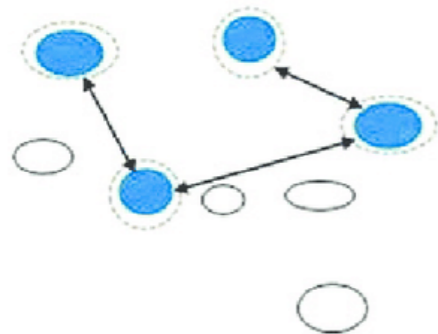


Prof. Ilkka Hanski  
(1953-2016)

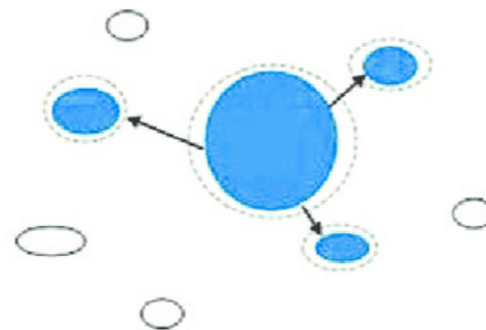


## Metapopulatie-benadering

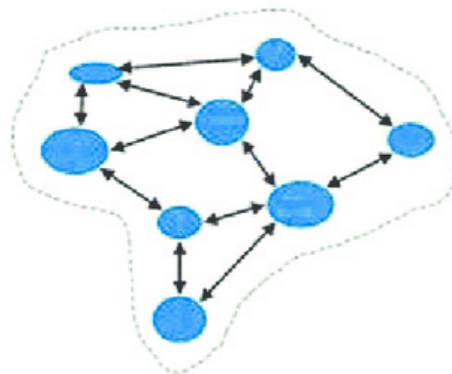
Klassieke metapopulatie



Continent-eiland model



Patchy populatie



Afzonderlijke populaties



Als kleine lokale populaties  
deel uitmaken van een  
groter, functioneel geheel  
of netwerk

→ **metapopulatie**-concept

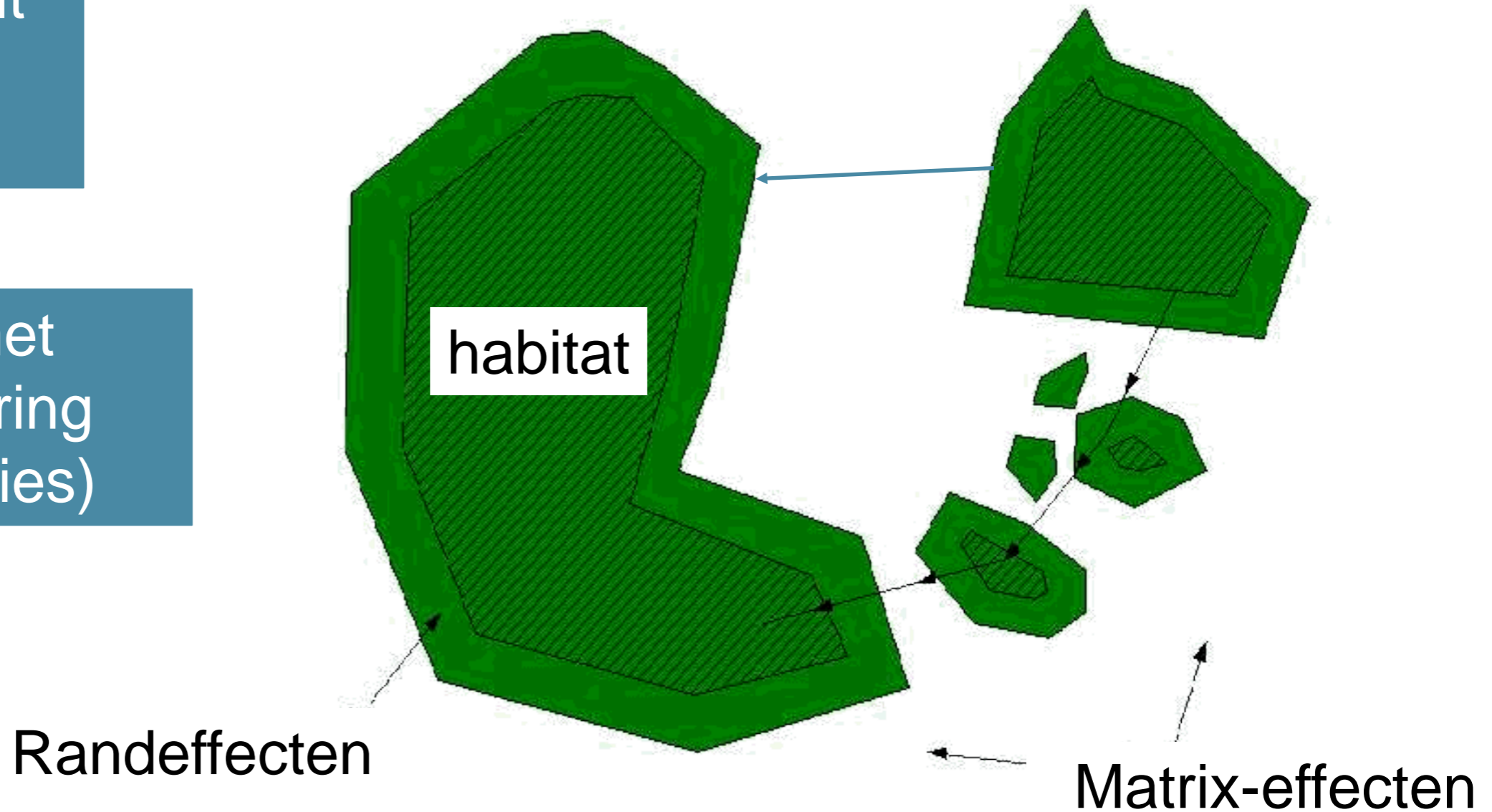
Ruimtelijke schaal populatiedynamiek & mobiliteit!



# Invloed landschap op functioneren populaties

- Habitatkwaliteit
- Uitwisseling & kolonisatie

→ Interacties met klimaatverandering (extreme condities)





# Belang van landschapselementen



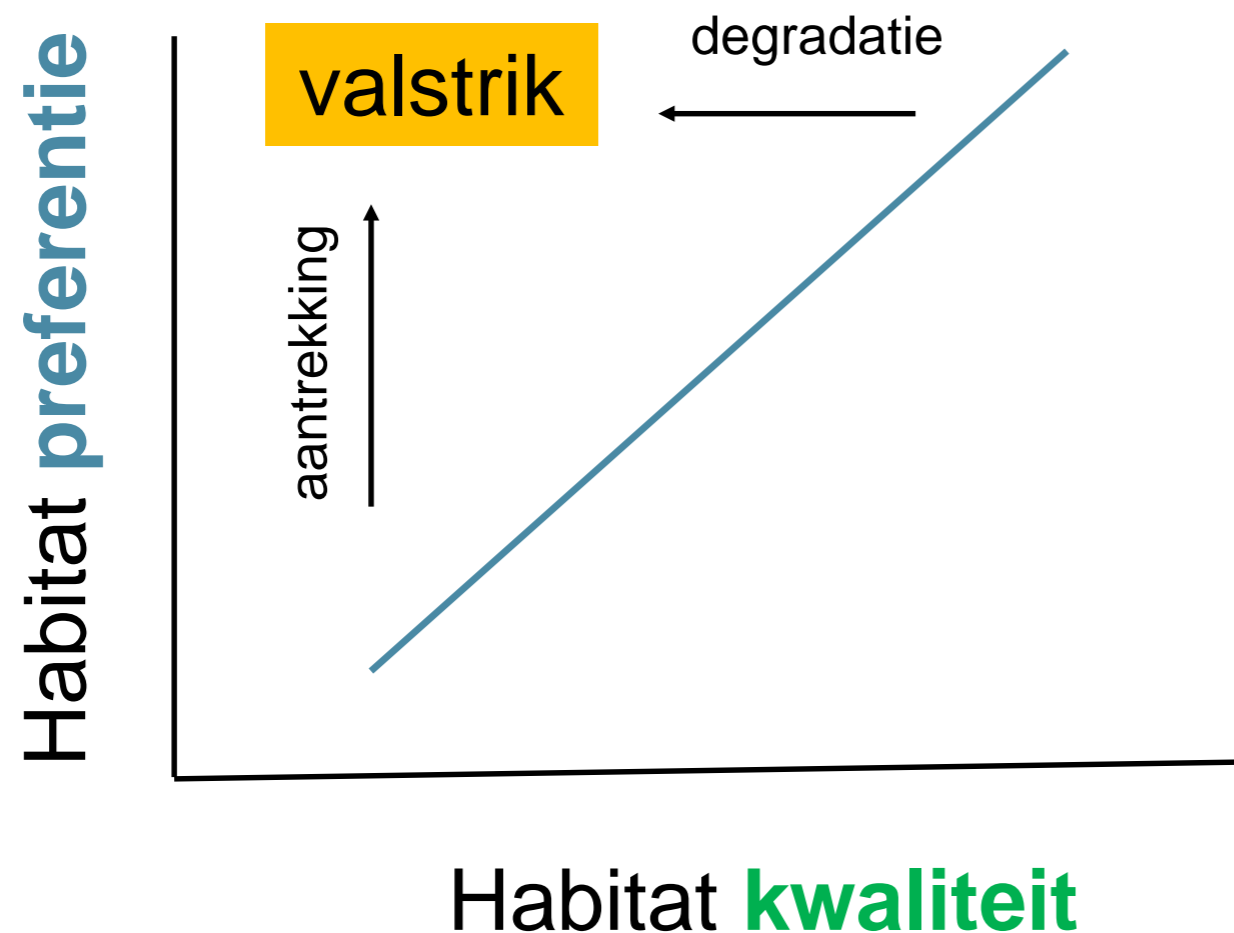
**Groene infrastructuur:**  
geheel, meer dan de som

- Biodiversiteitsverlies
- Klimaatverandering
- Natuur & landschap als dienstencentrum
- Urbanisatie





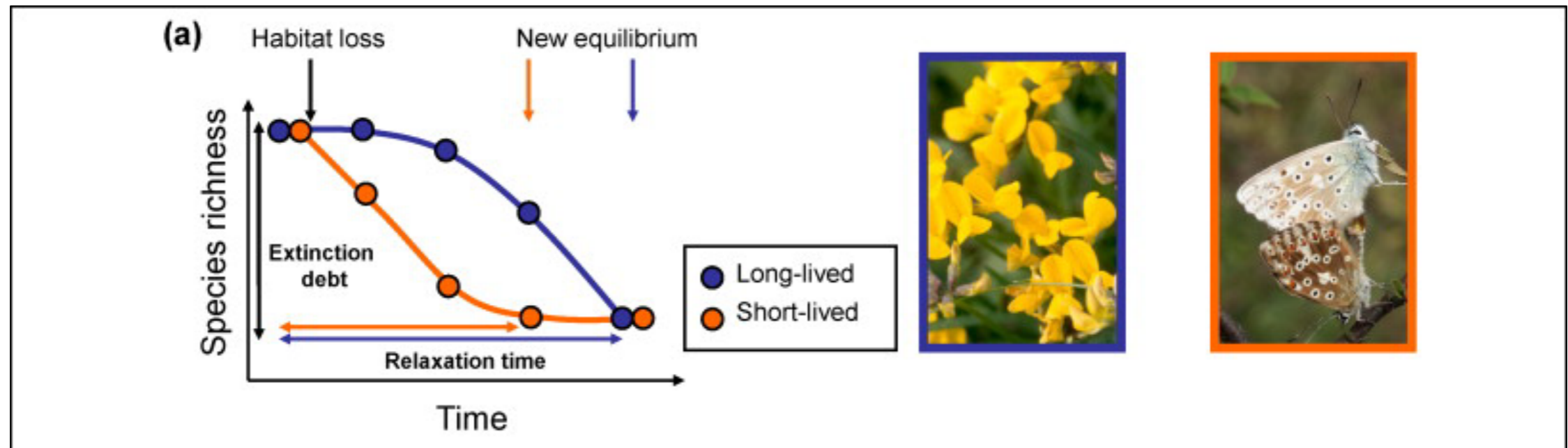
# Ecologische valstrikken in landschappen op mensenmaat



[Titeux, Aizpurua, Hollander, Sardà-Palomera, ... & Van Dyck (2020) Ecological traps and species distribution models: a challenge for prioritizing areas of conservation importance. *Ecography* 43: 365-375]



# Verdwenen landschappen als functionele realiteit?

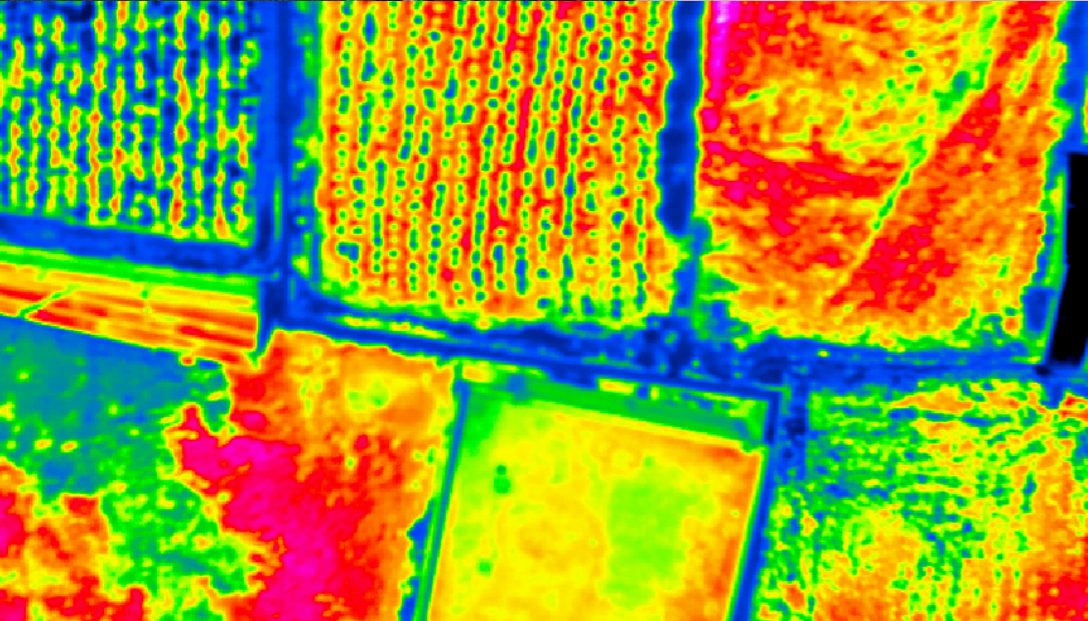


→ Uitstervingsschuld ('extinction debt')

[Kussaari M. *et al.* 2009. Extinction debt: a challenge for biodiversity conservation. *Trends in Ecology & Evolution* 10: 564-571]



# Landschappen & ecologische verrijking



- Hoge betonneringsgraad
- Dicht wegennetwerk
- Beperkte oppervlakte beschermde natuur & bos
- Landbouwbiodiversiteit
- Stedelijke biodiversiteit
- Thermische dimensie van landschappen



# De klank van het landschap



**Biofonie:** hoe beïnvloedt het landschap de 'soundtrack' van onze biodiversiteit? En de beleving van de akoestische omgeving/

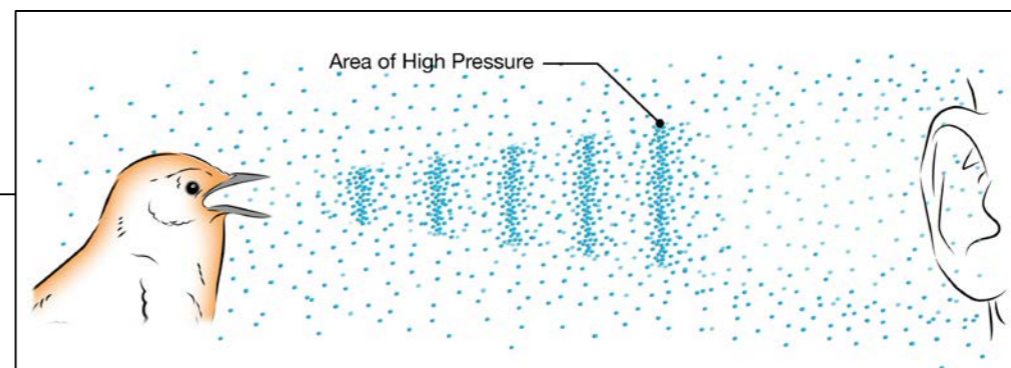
Landscape Ecol (2020) 35:1875–1889  
<https://doi.org/10.1007/s10980-020-01049-x>



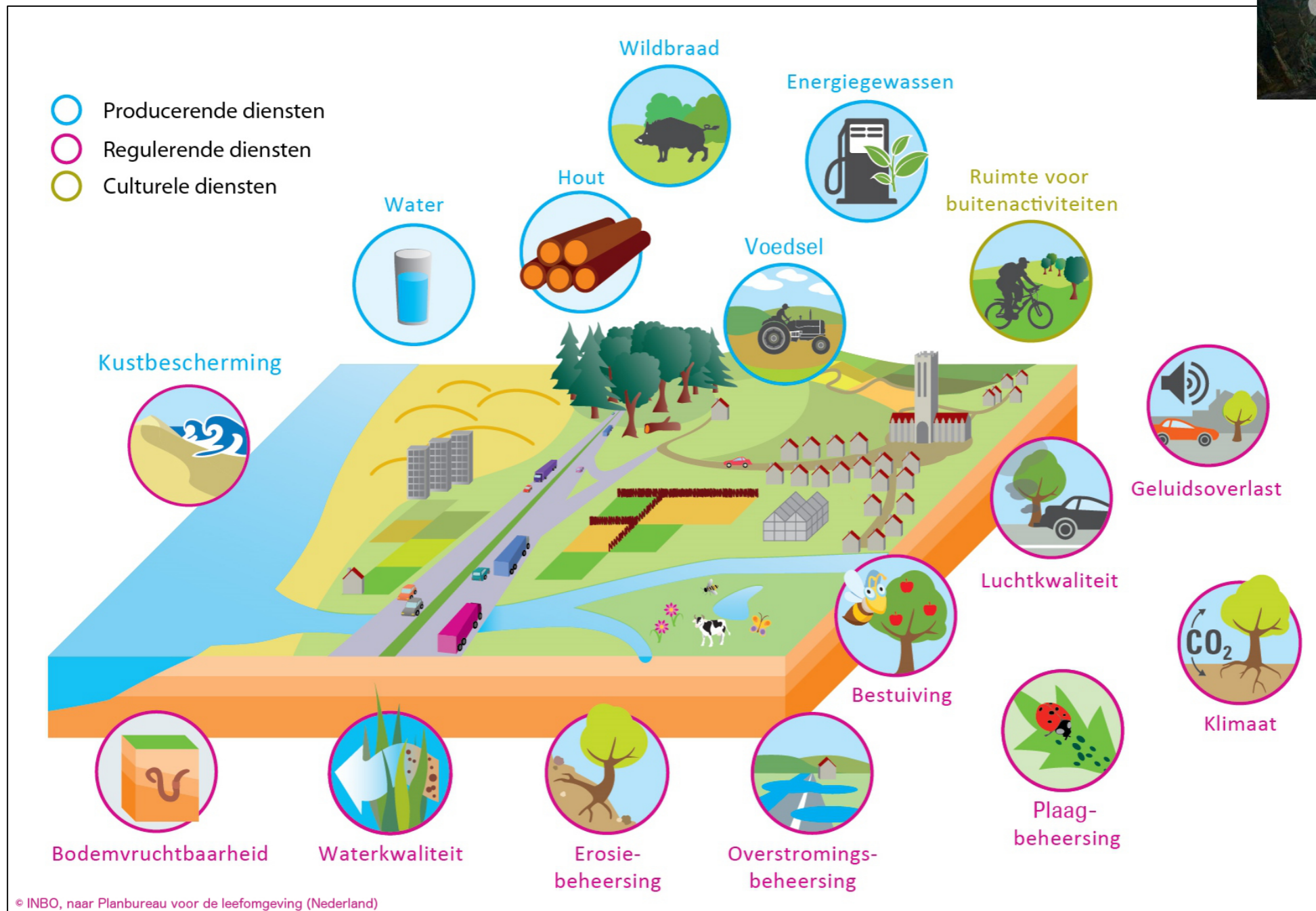
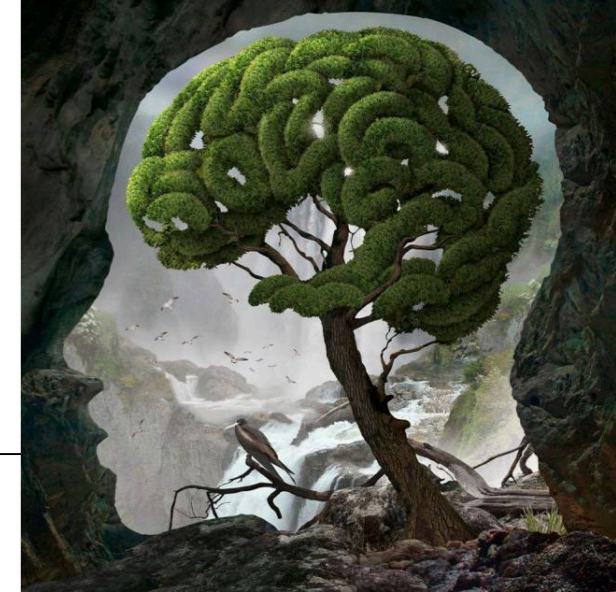
RESEARCH ARTICLE

## Landscape influence on biophony in an urban environment in the European Alps

Jacob Dein  · Johannes Rüdisser 



# Natuur als dienstencentrum





Science and Policy  
for People and Nature



[Biodiversitätspanel]



# Wat is gezondheid?



"**Gezondheid** is een toestand van volledig lichamelijk, geestelijk en maatschappelijk welzijn en niet slechts de afwezigheid van ziekte of andere lichamelijke gebreken."

WHO - Wereldgezondheidsorganisatie

→ Rol omgevingskwaliteit



**World Health  
Organization**



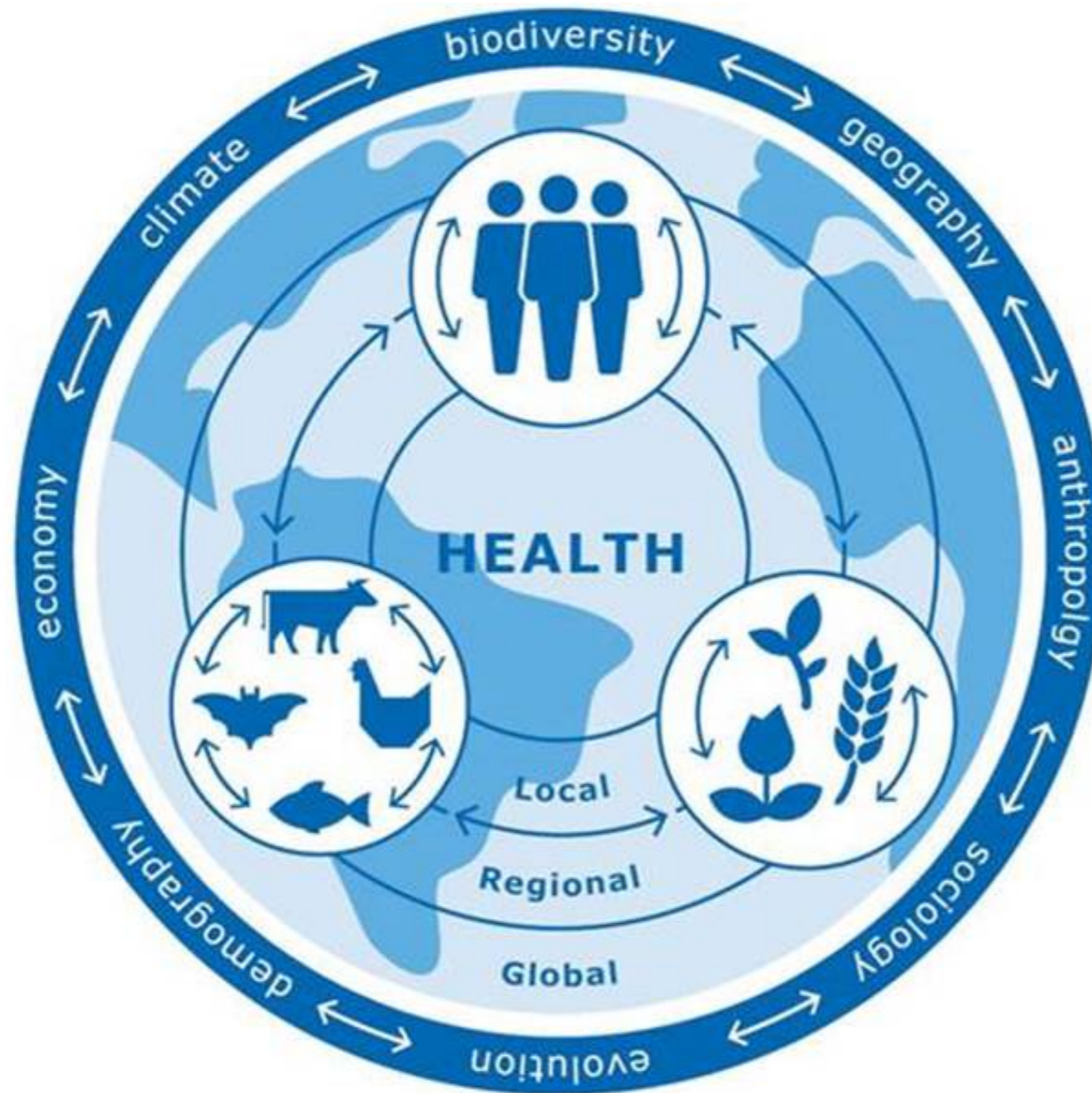


# Gezondheid als breder ecologisch concept

mens

dier

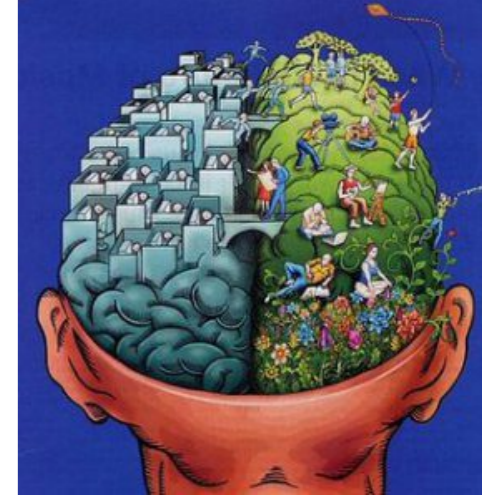
omgeving



« One Health »  
Concept



# Natuurcontact: psychologische ecosysteemdienst



Quality of life → Ecosysteemdienst

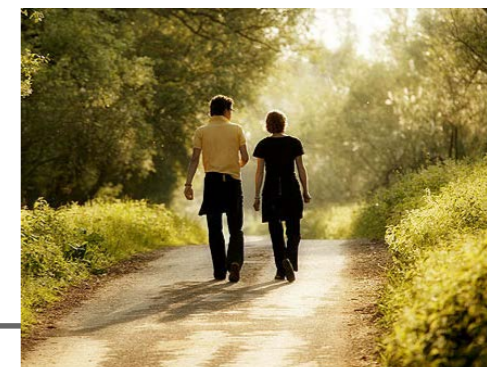
SCIENCE ADVANCES | REVIEW

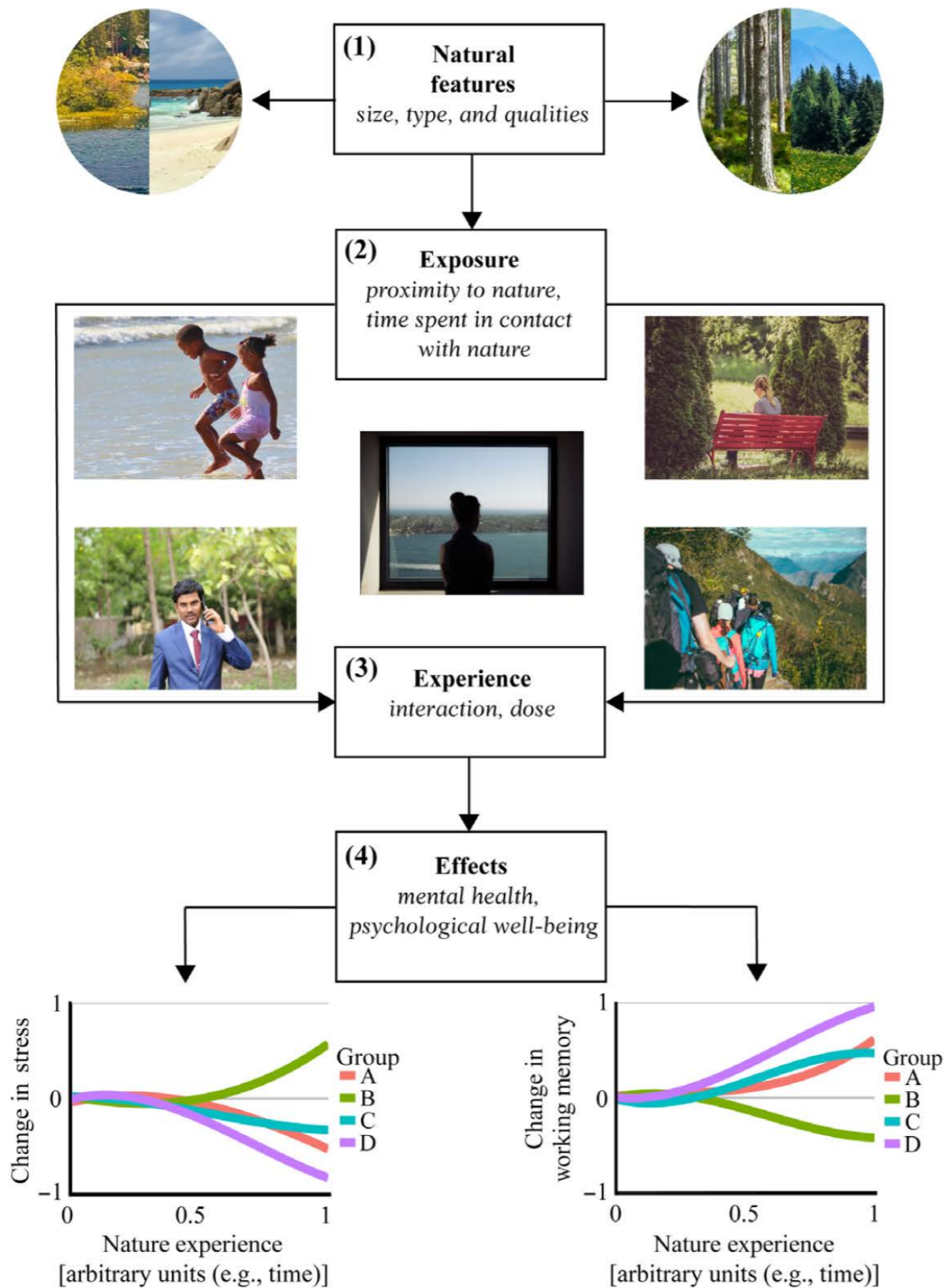
**SOCIAL SCIENCES**

## Nature and mental health: An ecosystem service perspective

Gregory N. Bratman<sup>1,2,3,4\*</sup>, Christopher B. Anderson<sup>3,5</sup>, Marc G. Berman<sup>6,7</sup>, Bobby Cochran<sup>8</sup>, Sjerp de Vries<sup>9</sup>, Jon Flanders<sup>10,11</sup>, Carl Folke<sup>12,13,14</sup>, Howard Frumkin<sup>15,16</sup>, James J. Gross<sup>17</sup>, Terry Hartig<sup>18,19</sup>, Peter H. Kahn Jr.<sup>1,20</sup>, Ming Kuo<sup>21</sup>, Joshua J. Lawler<sup>1,2</sup>, Phillip S. Levin<sup>1,2,22</sup>, Therese Lindahl<sup>14</sup>, Andreas Meyer-Lindenberg<sup>23</sup>, Richard Mitchell<sup>24</sup>, Zhiyun Ouyang<sup>25</sup>, Jenny Roe<sup>26</sup>, Lynn Scarlett<sup>27</sup>, Jeffrey R. Smith<sup>3,5</sup>, Matilda van den Bosch<sup>28,29</sup>, Benedict W. Wheeler<sup>30</sup>, Mathew P. White<sup>30</sup>, Hua Zheng<sup>25</sup>, Gretchen C. Daily<sup>3,4,5,31\*</sup>

[*Science Advances* (2019) 5: eaax0903]





Biodiversiteit, natuur,  
landschap

Blootstelling

Ervaring, contact

Invloeden

[Bratman et al. (2019) *Science Advances* 5: eaax0903]



# Als natuurcontact zeldzaam wordt...



[Soga M. & Gaston K.J. 2016.  
Extinction of experience: the loss  
of human-nature interactions.  
*Front. Ecol. Environm.* 14: 94-101]




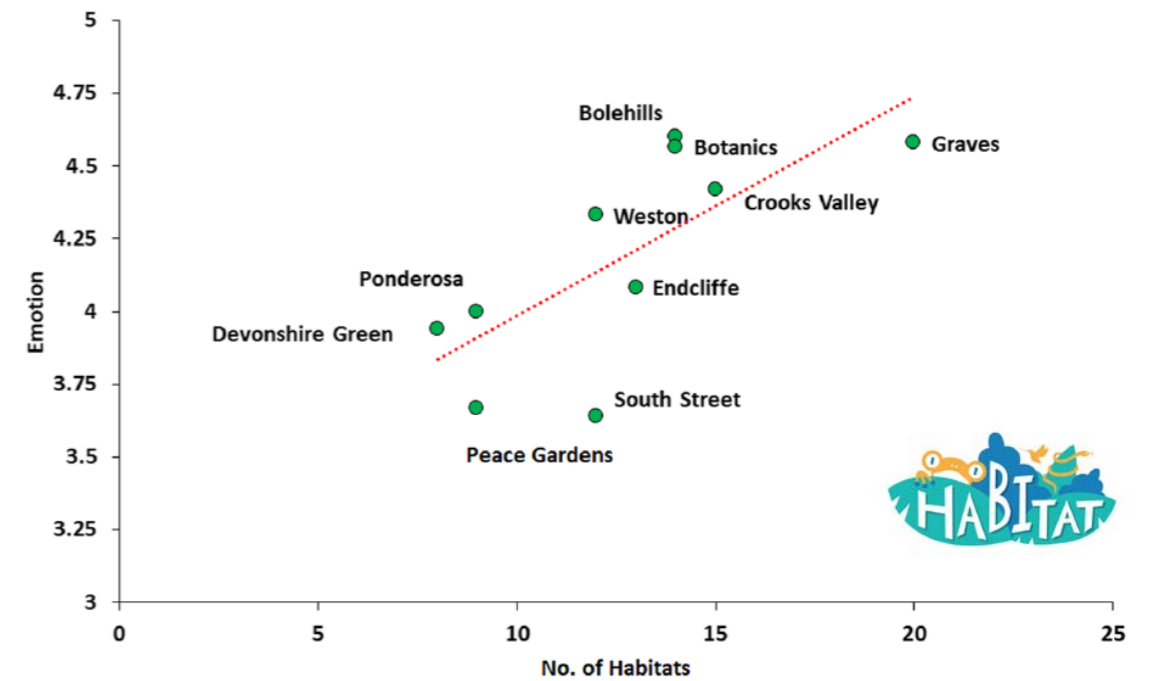
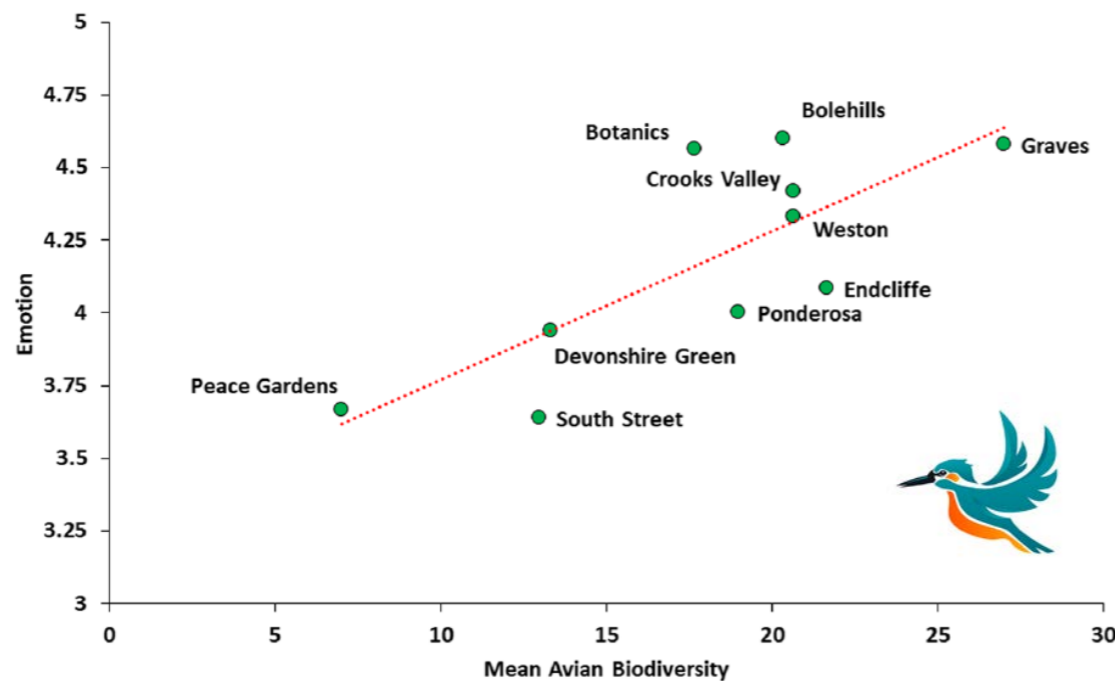
# Positieve emoties in biodiversers stedelijk groen

Urban Ecosystems (2020) 23:301–317  
<https://doi.org/10.1007/s11252-020-00929-z>

Where the wild things are! Do urban green spaces with greater avian biodiversity promote more positive emotions in humans?



Ross W. F. Cameron<sup>1</sup>  • Paul Brindley<sup>1</sup> • Meghann Mears<sup>1</sup> • Kirsten McEwan<sup>2</sup> • Fiona Ferguson<sup>2</sup> • David Sheffield<sup>2</sup> • Anna Jorgensen<sup>1</sup> • Julie Riley<sup>3</sup> • Jon Goodrick<sup>3</sup> • Liz Ballard<sup>3</sup> • Miles Richardson<sup>2</sup>



# Nieuwe kansen voor oude « vriendschappen »?

PERSPECTIVE

PEOPLE  
AND  
NATURE

BRITISH  
ECOLOGICAL  
SOCIETY

Rekindling old friendships in **new landscapes**:  
The environment-microbiome-health axis in the realms of  
landscape research

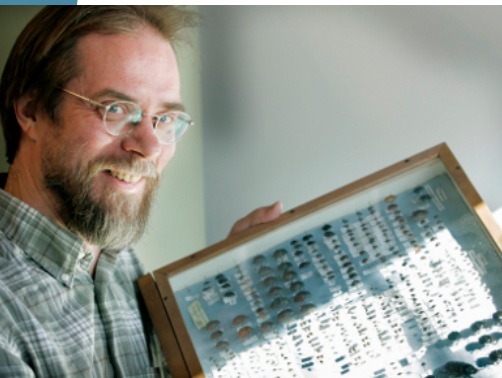
Jake M. Robinson<sup>1,2,3</sup>  | Anna Jorgensen<sup>1</sup> 

[*People and Nature* (2020) 2: 339-349]

**Biodiversity**  
WE ARE ALL IN THIS TOGETHER



# Hanski-blik (deel 2)



109 (2012): 8334-8339

## Environmental biodiversity, human microbiota, and allergy are interrelated

Ilkka Hanski<sup>a,1</sup>, Leena von Hertzen<sup>b</sup>, Nanna Fyhrquist<sup>c</sup>, Kaisa Koskinen<sup>d</sup>, Kaisa Torppa<sup>a</sup>, Tiina Laatikainen<sup>e</sup>, Piia Karisola<sup>c</sup>, Petri Auvinen<sup>d</sup>, Lars Paulin<sup>d</sup>, Mika J. Mäkelä<sup>b</sup>, Erkki Vartiainen<sup>e</sup>, Timo U. Kosunen<sup>f</sup>, Harri Alenius<sup>c</sup>, and Tari Haahtela<sup>b,1</sup>

<sup>a</sup>Department of Biosciences, University of Helsinki, FI-00014 Helsinki, Finland; <sup>b</sup>Skin and Allergy Hospital, Helsinki University Central Hospital, FI-00029 Helsinki, Finland; <sup>c</sup>Finnish Institute of Occupational Health, FI-00250 Helsinki, Finland; <sup>d</sup>Institute of Biotechnology, University of Helsinki, FI-00014 Helsinki, Finland; <sup>e</sup>National Institute for Health and Welfare, FI-00271 Helsinki, Finland; and <sup>f</sup>Department of Bacteriology and Immunology, Haartman Institute, University of Helsinki, FI-00014 Helsinki, Finland

Contributed by Ilkka Hanski, April 4, 2012 (sent for review March 14, 2012)

PNAS

 **frontiers**  
in Microbiology

PERSPECTIVE  
published: 06 October 2017  
doi: 10.3389/fmicb.2017.01935



## Linking the Gut Microbial Ecosystem with the Environment: Does Gut Health Depend on Where We Live?

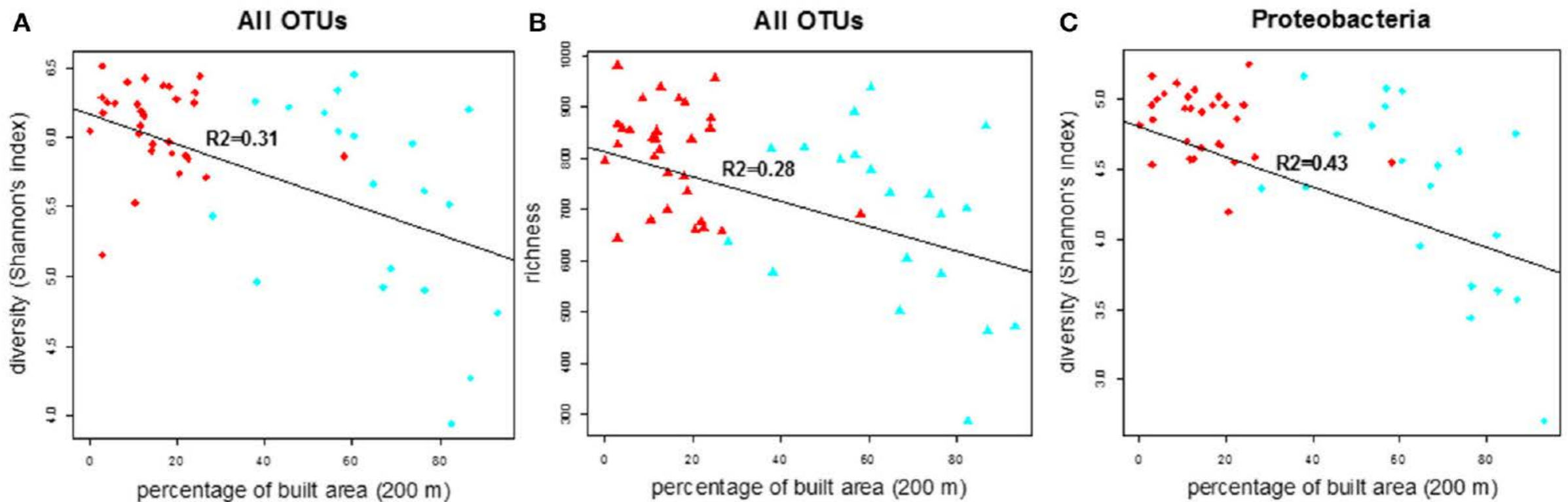
Nishat Tasnim, Nijati Abulizi, Jason Pither, Miranda M. Hart<sup>\*†</sup> and Deanna L. Gibson<sup>\*†</sup>

Department of Biology, The Irving K. Barber School of Arts and Sciences, University of British Columbia, Kelowna, BC, Canada



# Lessen uit landschap via de deurmat...

## Diversiteit aan bacteriën



% bebouwd oppervlak (200 m)

[Parajuli *et al.* 2018. *Frontiers in Microbiology* 9: art 84]





# « Microbiome rewilding hypothesis »

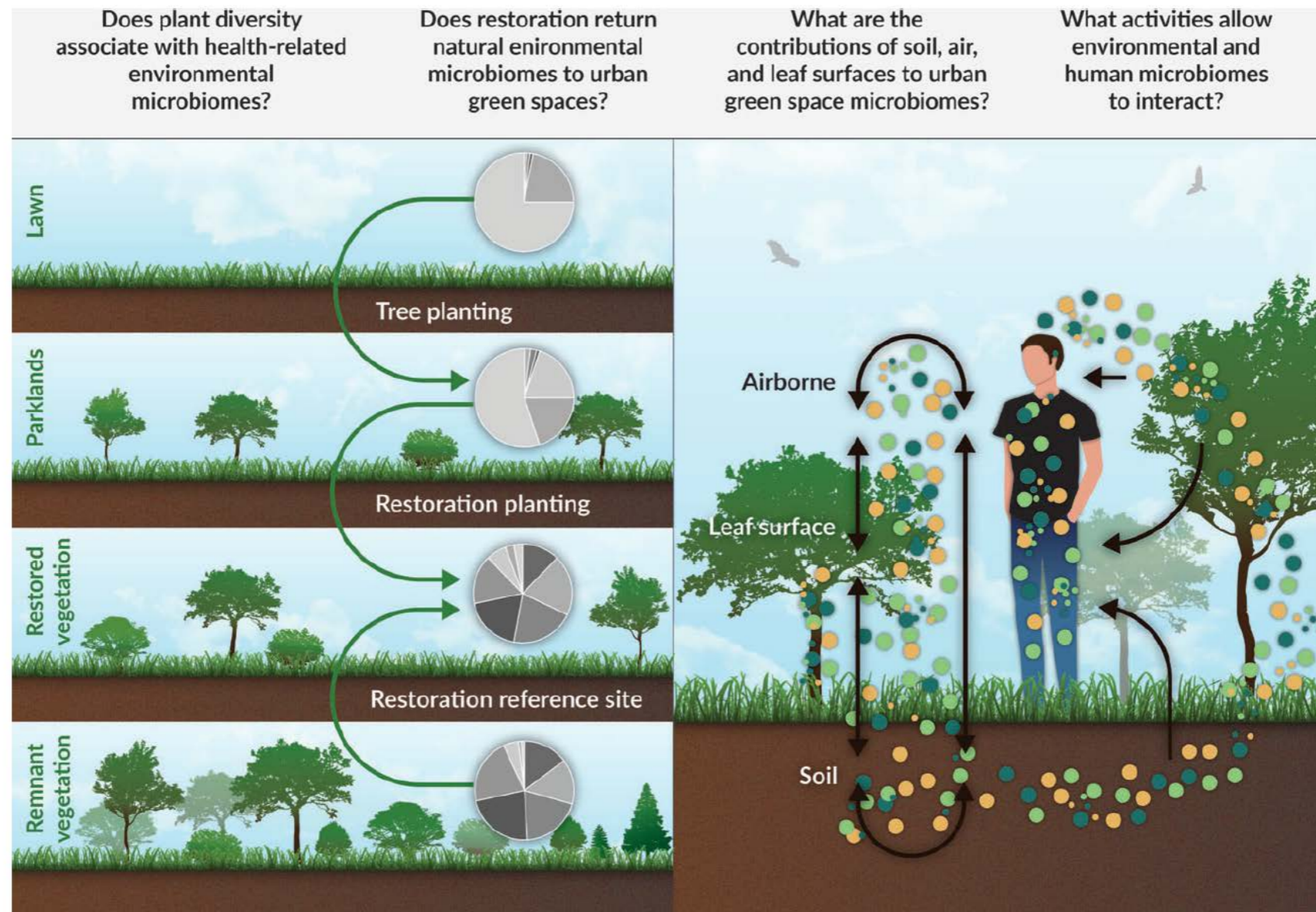
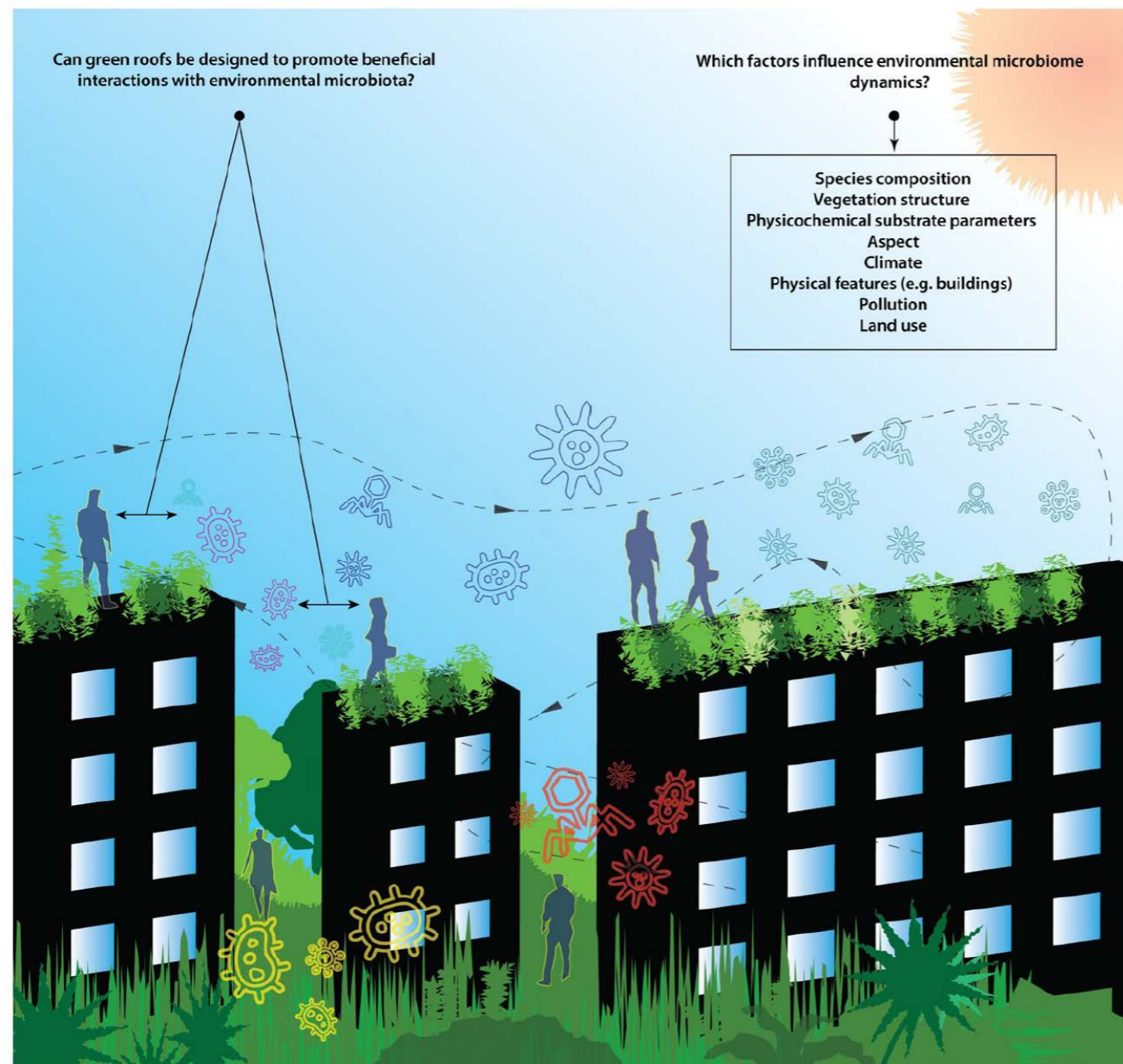


Figure 1. Some key knowledge gaps of the Microbiome Rewilding Hypothesis.

[Mills et al. 2017. *Restoration Ecology* 25: 866-872]



# Nieuwe landschappen...



→ Biodiverse  
groenvoorziening:  
nieuwe  
perspectieven

**FIGURE 2** Can green roofs be designed to promote beneficial interactions between humans and diverse microbial assemblages, specific immunoregulatory taxa, or 'old friends'? (created by authors)

[Robinson & Jorgensen 2020. *People and Nature* 2: 339-349]



[*Landscape and Urban Planning* (2020) 199: 103819]



Contents lists available at [ScienceDirect](#)

Landscape and Urban Planning

journal homepage: [www.elsevier.com/locate/landurbplan](http://www.elsevier.com/locate/landurbplan)



Implementing human health as a landscape service in collaborative landscape approaches

Paul Opdam

Wageningen University & Research, Land Use Planning Group, PO Box 47, 6700 AA, Wageningen, The Netherlands



REVIEW

CONSERVATION

## Landscapes that work for biodiversity and people

C. Kremen\* and A. M. Merenlender

[*Science* (2018)  
362: eaau6020]

[*Sustainability*  
(2020) 12: 1360]




sustainability



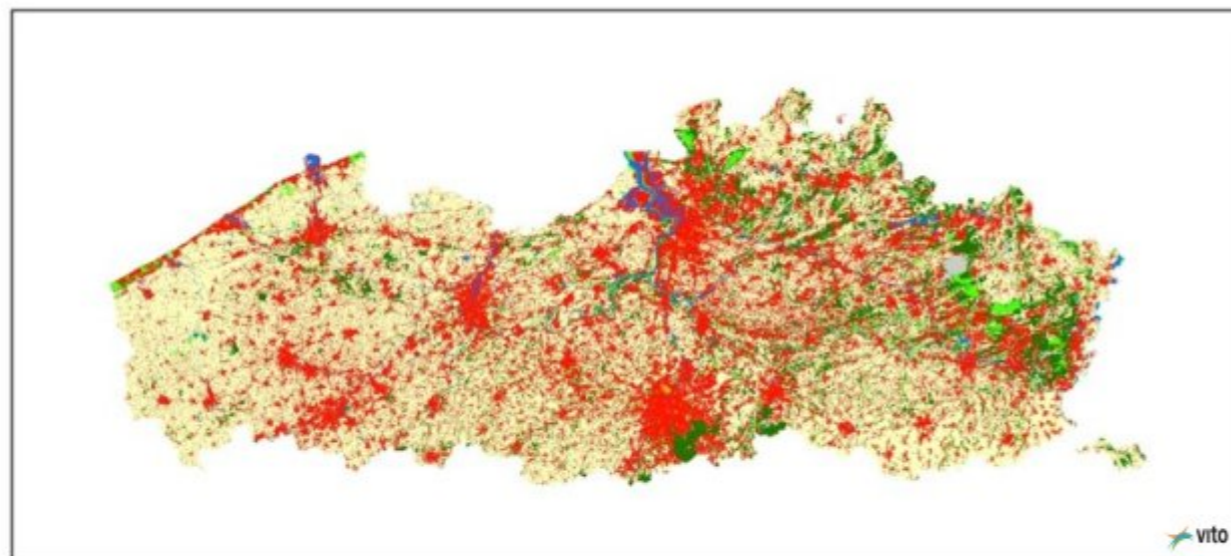
Article

## Evidence-Based Landscape Architecture for Human Health and Well-Being

Robert D. Brown<sup>1,\*</sup>  and Robert C. Corry<sup>2</sup> 



# Nationale Parken & Landschapsparken



Overig Landbouw Natuur Bebouwde ruimte Bos Parkgebieden Water





Provincie  
Antwerpen

Landschapsdag

Symposium 'Landschappen inspireren  
en integreren'

► Programma

## Symposium 'Landschappen inspireren en integreren'

Het symposium 'Landschappen inspireren en integreren' gaat door op dinsdagvoormiddag 27 oktober, als webinar. Verschillende landschapsexperten geven hun visie en bespreken de kansen en uitdagingen m.b.t. landschapskwaliteit.



**Waarom?** De Europese Landschapsconventie heeft als doel de bescherming, het beheer en de inrichting van landschappen te bevorderen. Via samenwerking en participatie pleit de conventie voor het beschrijven en realiseren van kwaliteitsdoelstellingen, zowel voor uitzonderlijke als alledaagse landschappen.





Dank voor uw aandacht!

