

I²PCC

Interprovincial Internationalization Project China Cleantech



EFRO
EUROPEES FONDS
VOOR REGIONALE
ONTWIKKELING



Europese Unie

I²PCC

Ludwig Caluwé

Gedeputeerde Provincie Antwerpen



EFRO
EUROPEES FONDS
VOOR REGIONALE
ONTWIKKELING



Europese Unie

Content

1. About I²PCC

1. Partnership and structure
2. Mission
3. Project timeline

2. Chinese partner regions

What – where – Cleantech needs defined

3. Contact information

A joint EU project of

The provinces of Antwerp, Limburg,
East Flanders, Flemish Brabant and POM
Antwerp

In partnership with

Flanders Investment & Trade
Cleantech Flanders



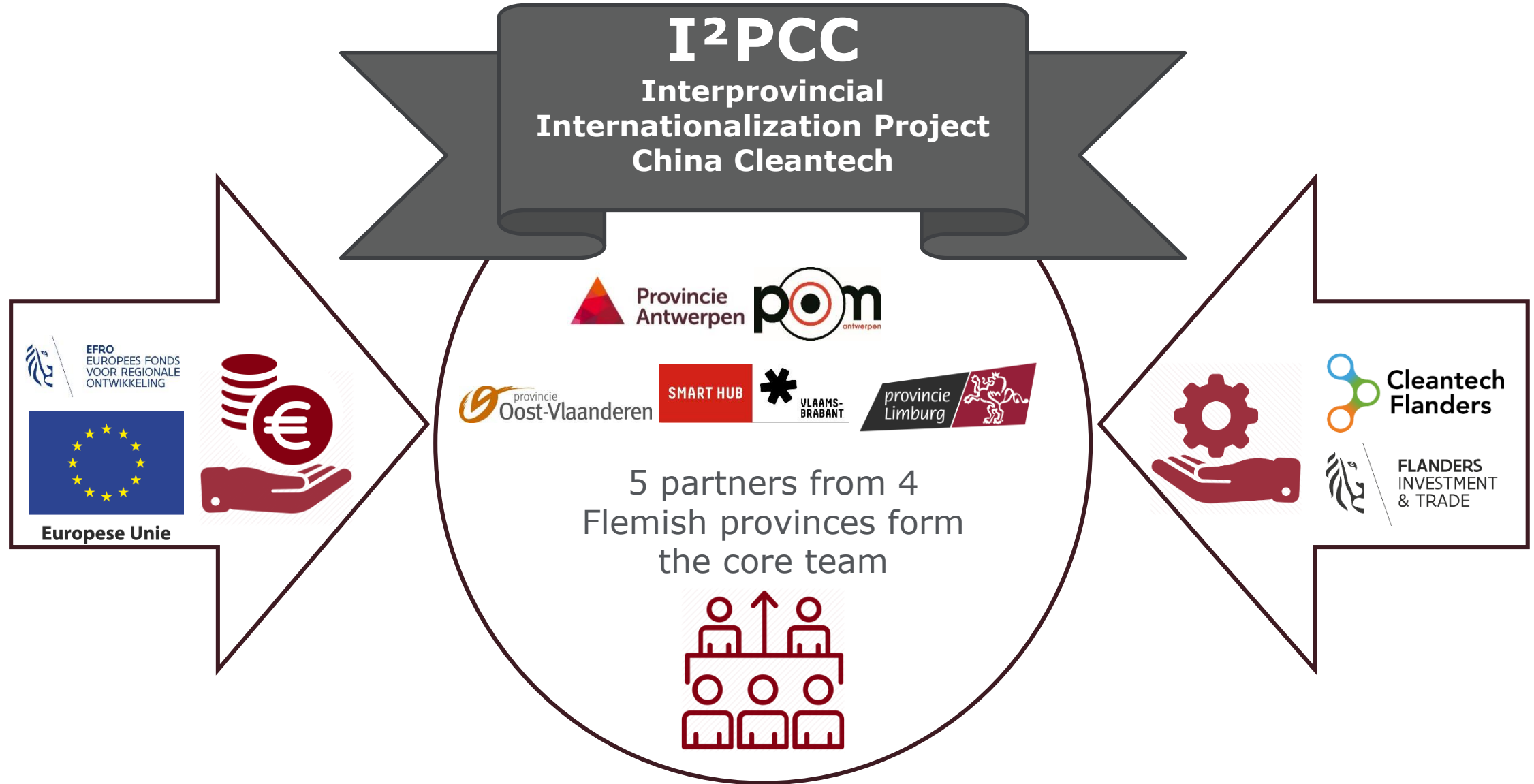
EFRO
EUROPEES FONDS
VOOR REGIONALE
ONTWIKKELING



Europese Unie



Who is I²PCC ?

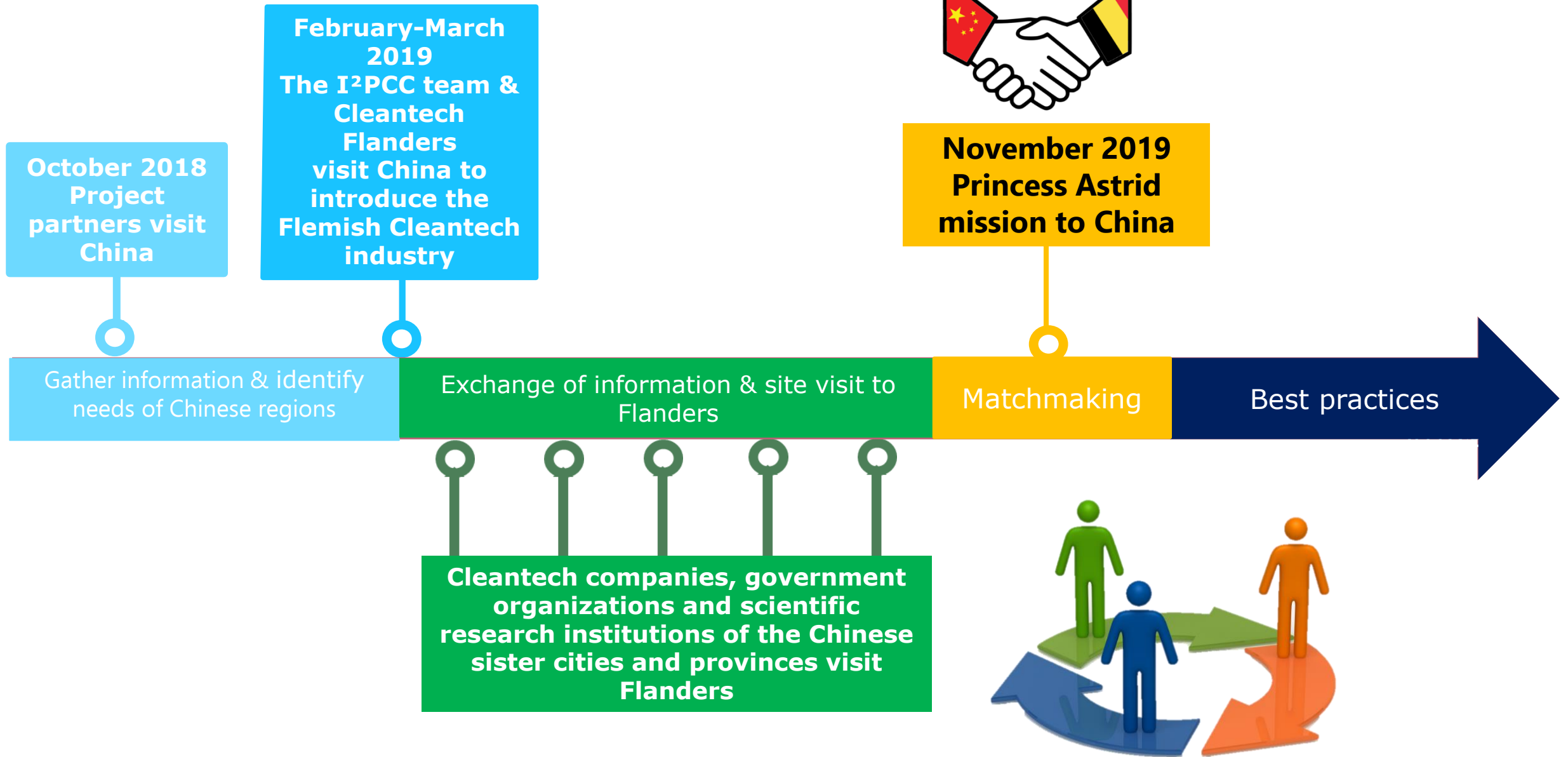


Our mission:

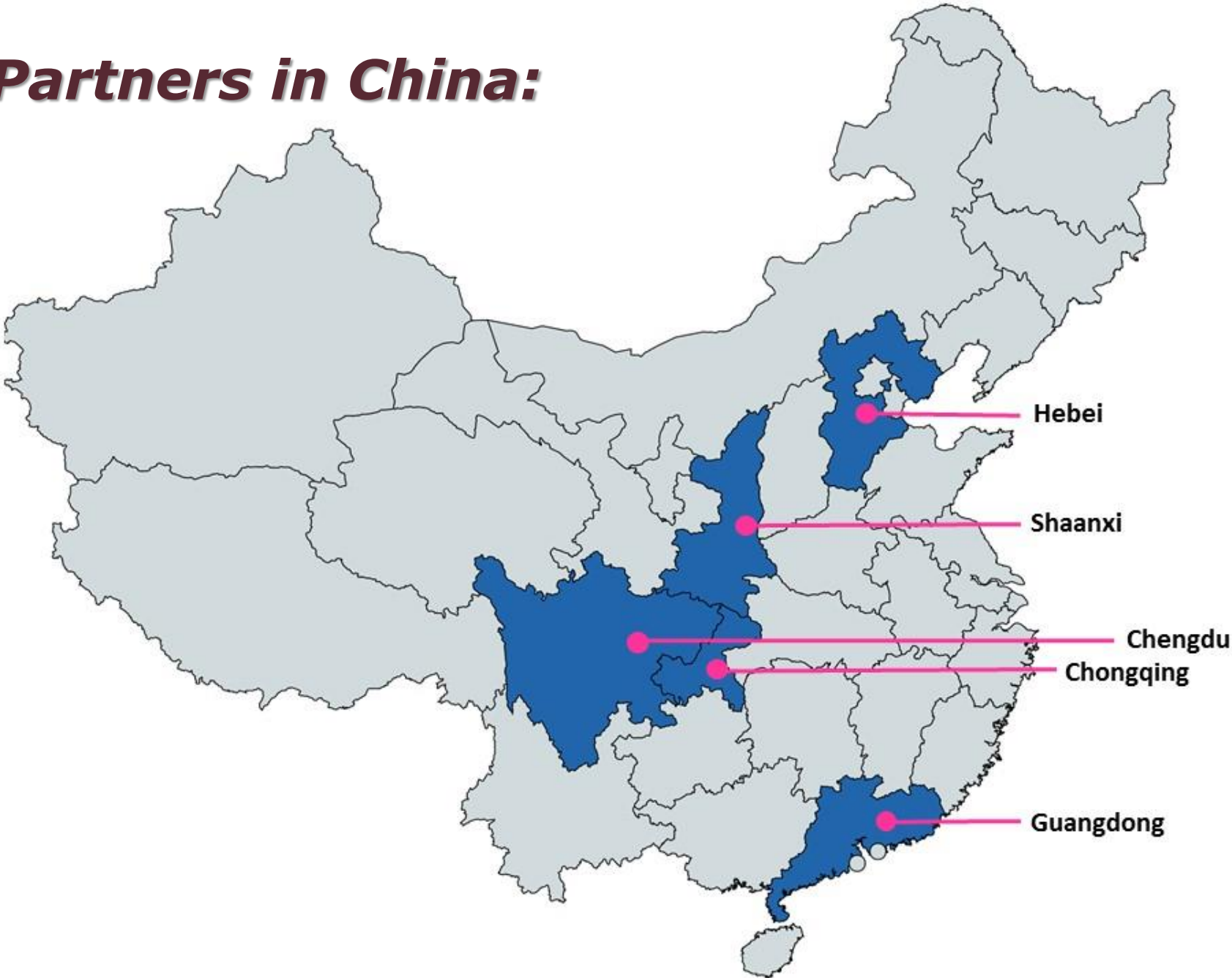


- ✓ *Boost the internationalisation process of SME's in the cleantech industry*
- ✓ *Facilitate quicker lift off of SME's in innovation domains*
- ✓ *Provide solutions for China's environmental challenges and boost win-wins*
- ✓ *Stabilise the market position of Flanders in the field of cleantech*
- ✓ *Deepen the Sino-Belgian cooperation on cleantech domains*

Project timeline:



Our Partners in China:



Hebei Province – East Flanders

✓ Our sister-relationship: **More than 25 years of cooperation**

✓ ***About Hebei:***

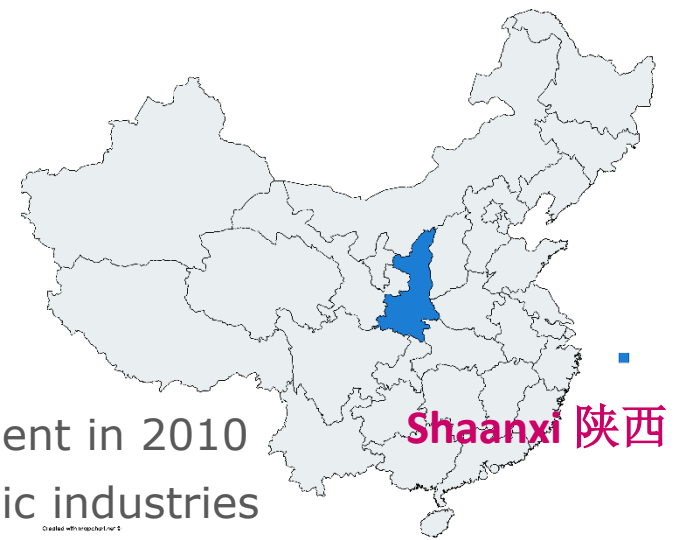
- ❖ Population: 65 million, Area: 188 000 km²
- ❖ **Strategic position** around Beijing capital and port city Tianjin, +- 1h train from Beijing to Shijiazhuang
- ❖ Important part of the **food and agriculture sector** in China
- ❖ A history and presence of **heavy industry**
- ❖ Part of the **'Xiong'an new national zone' (Baoding)**
- ❖ Co-host of the **Winter Games 2022** (Zhangjiakou)



Shaanxi Province – Antwerp

✓ Our sister-relationship:

- ❖ started in **1985**, **first province** in Belgium, awarded by Chinese government in 2010
- ❖ Projects in the fields of education and the development of our key economic industries



✓ ***About Shaanxi:***

- ❖ Population: 38 million , Area: 205 800 km²
- ❖ **Ancient capital** of China, start of the historical Silk Road
- ❖ Abundant **energy reserves** and related industry
- ❖ Strong manufacturing & processing **industrial base** (aviation, space flight, electronic information)
- ❖ **Largest University and R&D hub** in NW China, only National-level Agricultural Development Zone

Chengdu – Flemish Brabant

✓ Our sister-relationship:

- ❖ Cooperation started in **2011**
- ❖ Focus on Smart Hub Flemish Brabant clusters: **health, logistics, food, cleantech & creativity**



✓ **About Chengdu:**

- ❖ Population: +15 million , Area: 14.000 km²
- ❖ **Capital of Sichuan Province**; national-level central city
- ❖ **Strategic pivot city** of Belt & Road Initiative
- ❖ 76 national-level innovation **R&D platforms**
- ❖ **2017 GDP: 1811.86 Billion EUR** (964.05 Billion EUR **Tertiary**)

Chongqing – POM Antwerp



✓ Our sister-relationship:

- ❖ Agreement was signed in **2010**, rep office of POM Antwerp in Chongqing opened in **2011**

✓ **About Chongqing**

- ❖ Population: 32 million, Area: 82.000 km²
- ❖ '**Municipality**' (city with provincial power under direct administration of the Chinese central government)
- ❖ Located on the **Yangtze river** (longest river in Asia & one of the busiest rivers in the world)
- ❖ Downstream **Three Gorges Dam** forces Chongqing to **focus on water treatment**
- ❖ Focus shift from urban area to **rural area's**

Guangdong Province – Limburg

✓ Our sister-relationship

- ❖ Was signed in **2015**, witnessed by the Chinese President and the King of Belgium



✓ ***About Guangdong***

- ❖ Population: 111.69million , Area: 177 900 km²
- ❖ Expected to be the 6th largest economy in the world in 2035
- ❖ Committed to renewable energy and emission reduction
- ❖ Forming the Greater Bay Area, together with HongKong and Macau,
- ❖ Known as the “factory of the world”, center of China’s export-led manufacturing industries
- ❖ Other main industrial domains: **textile, consumer electrics, furniture, architectural ceramics,** food and electric cars

Contact information:



Ms Nausikaä Lagrou
International Affairs Manager
Province of East Flanders
+32 92678744

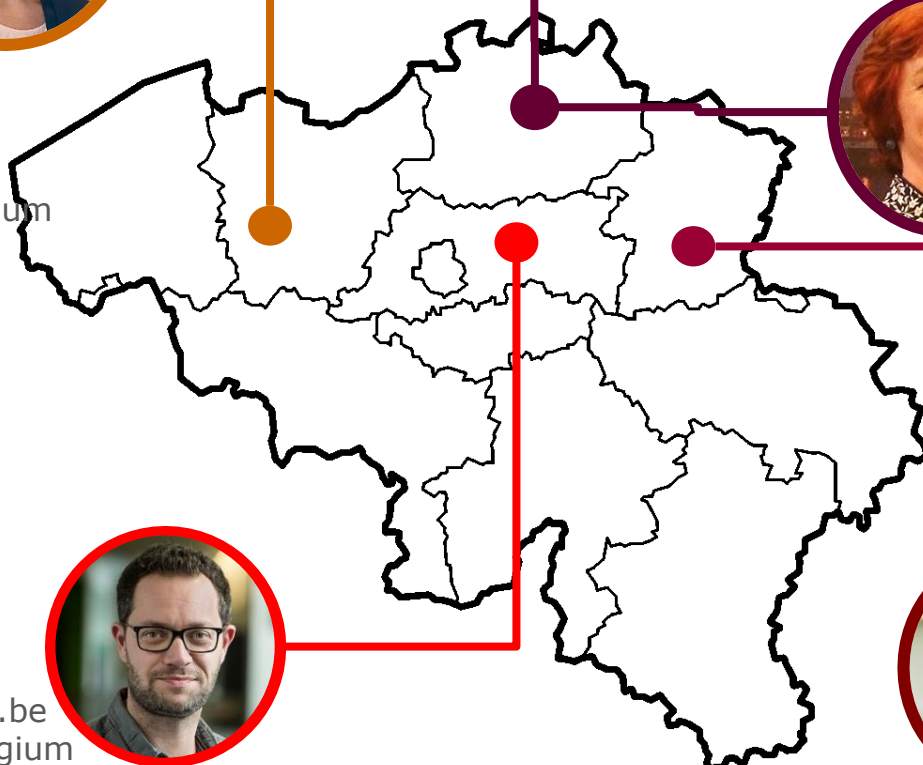
nausikaa.lagrou@oost-vlaanderen.be
PAC W. Wilsonplein 2, 9000 Ghent Belgium
wxid_min4hg6f6ci822



Ms Sara Landuydt
Project Manager Internationalisation
POM Antwerp
+32 3 2406872
Sara.Landuydt@pomantwerpen.be
Koningin Elisabethlei 22, 2018 Antwerpen
saralanduydt



Ms Alice Cooman
Advisor International Cooperation
Province of Antwerp
+32 3 240 66 29
alice.cooman@provincieantwerpen.be
Koningin Elisabethlei 22, 2018
Antwerpen
alicecooman



Mr Geert Regelbrugge
International Affairs Manager
Province of Flemish Brabant
+32 16 267241

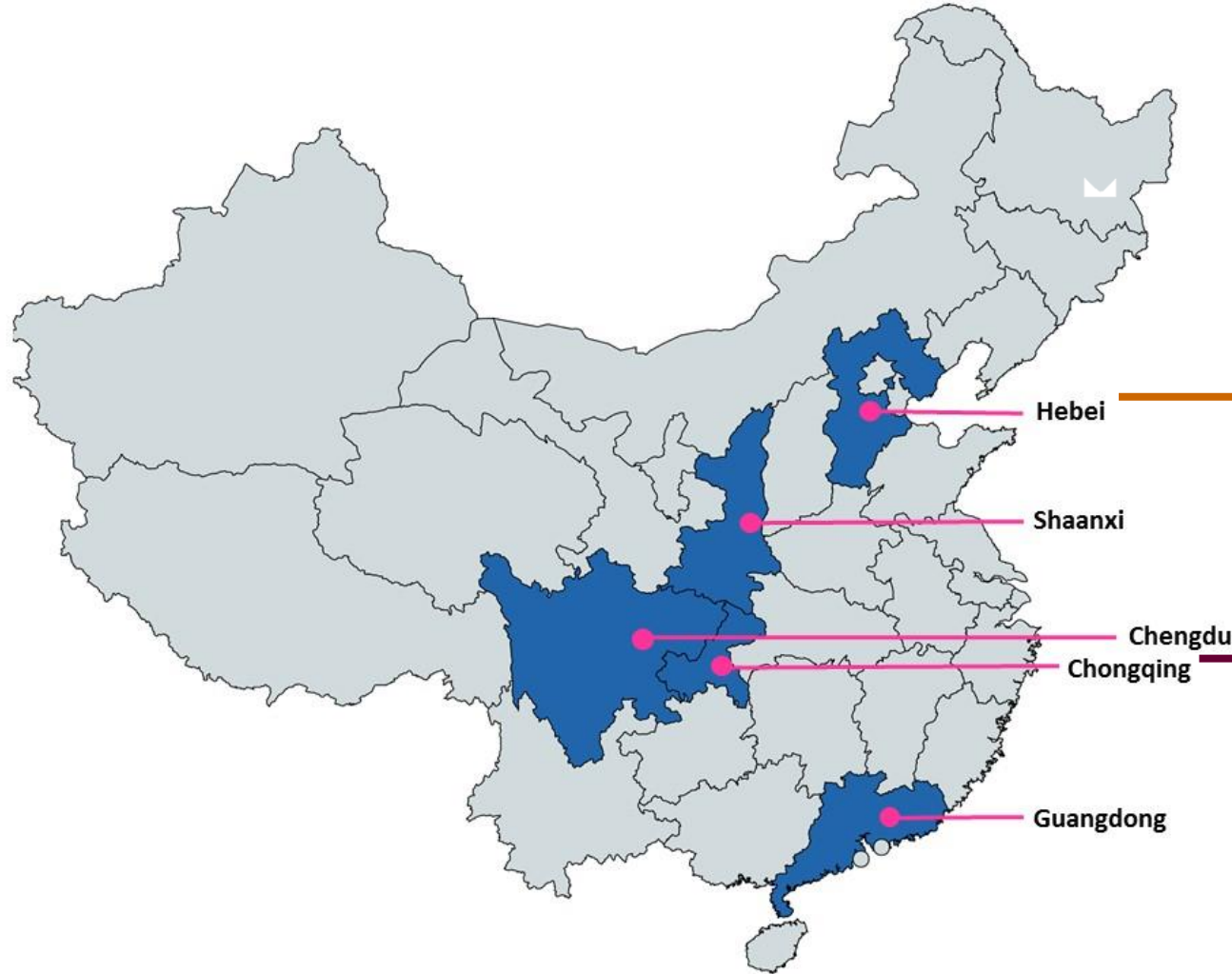
geert.regelbrugge@vlaamsbrabant.be
Provincieplein 1, 3010 Leuven, Belgium



Ms CHEN Yu
Director China Affairs Office
Province of Limburg
+32 11272312
yu.chen@pomlimburg.be
Kempische Steenweg 303/101,
3500 Hasselt, Belgium
JanetChenYu



Contact information:



Mr ZHANG Chi
Beijing-based Representative
Province of East Flanders
+86 13718535418
chi.zhang@chinaplatform.be



Mr. ZENG Su
POM Antwerp Chief Representative
China
+86 23 67756717 +86 138 0835 4770
zeng.su@pomantwerpen.be

Thank you

谢谢

Bedankt